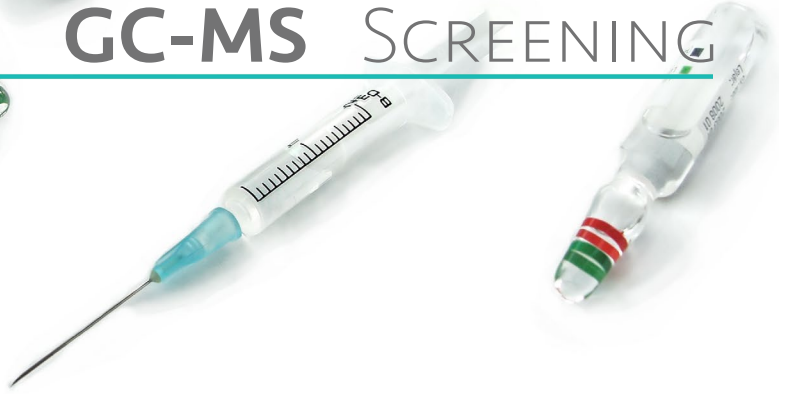


NAFS

National • Analytical • Forensic • Services

GC-MS SCREENING



ABOUT

Gas Chromatography-Mass Spectrometry (GC-MS) is used for qualitative unknown screening of volatile or semi-volatile compounds. GC-MS is the industry gold standard for the identification "finger printing" of compounds. GC-MS offers the advantage of compounds being separated on the GC- Column before it reaches the MS, thus GC-MS allows for the identification of several compounds in a single mixture. Each of the separated compounds will have a unique mass spectral fingerprint. The resulting MS spectrum is then compared to over 40 000 compounds in the United States NIST (National Institute of Standards and Technology) library to provide a comparative percentage match of the compound. *Note, compounds must have a boiling point under 320°C to allow analysis on GC-MS.*

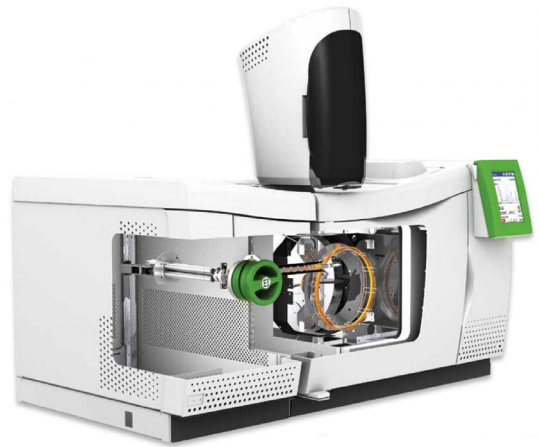
Qualitative analysis involves testing for the presence or absence of a compound, but does not provide information about the concentration of the compound. Percentage purity can however be determined by qualitative testing. For Quantitative testing refer to www.nafs.co.za or talk to one of our staff members to discuss your analytical need.

PERSONNEL

Our personnel are well trained and qualified to report trustworthy, ethical results. At NAFS regular proficiency testing and training cycles are employed to ensure that each staff member produces the highest quality analytical results.

INSTRUMENTATION

NAFS uses current state of the art analytical equipment to produce accurate tests results and maintain quick turnaround times. Upon sample reception we usually maintain a turnaround time of two working days. At NAFS we uphold rigorous instrumentation calibration and performance qualification schedules, to ensure our instrumentation is performing at an optimum.



PRICING

Qualitative Unkown Screen	-See Pricelist
Bulk samples	-Discounted

CONTACT US

1613 Sydney Brenner St
SAPPI Technology Centre - Lower ground floor
Pretoria
0020
Telephone: 087 806 1635
info@nafs.co.za
www.nafs.co.za

